

Press Release

June 30, 2026

Contact:
Magdalena Kirchner-Stephan
BAUER Aktiengesellschaft
BAUER-Strasse 1
86529 Schrobenhausen, Germany
Phone: +49 8252 97-1074
public.relations@bauer.de
www.bauer.de/en

BAUER Resources Contributes to the Implementation of an Innovative Energy Concept for a New Residential District in the Hanseatic City of Luebeck

- Housing for up to 1,000 residents across approximately 11.5 hectares in the St. Gertrud district
- Energy supply via a low-temperature district heating network using geothermal energy and heat pumps
- BAUER Resources installed 135 geothermal probes at an exceptional drilling depth of 170 m

Hanseatic City of Luebeck – Creating new housing while advancing sustainable energy solutions ranks among the top priorities of modern urban development. As part of the development of a new residential neighborhood in Luebeck’s St. Gertrud district, modern housing for up to 1,000 residents is currently being built approximately 2.5 km east of the city’s historic center. With this project, the Hanseatic City of Luebeck is delivering one of its flagship residential developments, combining much-needed housing with a sustainable energy supply concept.

Residential development and land use

The former Lauerhof allotment garden site is being transformed into an energy-efficient residential community featuring a mix of multi-story apartment buildings, townhouses, and semi-detached homes, all supplied with sustainable heating. Covering approximately 11.5 hectares, the Schlutuper Strasse/Lauerhofer Feld development plan provides for balanced residential use across roughly 53,700 m², including 89 townhouses and semi-detached homes as well as 14 multi-family residential buildings. The project also includes the construction of a parking garage with approximately 3,600 m² of floor space, around 41,000 m² of green and community-use areas, and more than 21,200 m² of road infrastructure.

Energy supply via a low-temperature district heating network

A defining feature of Luebeck’s development project is its innovative energy concept, to which the BAUER Umwelt division of BAUER Resources GmbH contributed on behalf of Stadtwerke Luebeck Innovation GmbH. The heating supply is based on a low-temperature district heating network combined with geothermal probes and decentralized heat pumps. In practical terms, geothermal energy is extracted from the subsurface through geothermal probes and fed into a low-temperature district heating network for distribution throughout the neighborhood. More than 130 geothermal probes are interconnected through a water-filled pipe network and will ultimately provide the residential district with thermal energy. Decentralized heat pumps within the buildings then upgrade this energy and deliver heating to the individual residential units.

“On the one hand, a low-temperature district heating network utilizes the naturally available geothermal energy as its primary energy source,” explains Marcel Moesslang, Senior Site Manager Geothermal Energy at BAUER Resources GmbH. “On the other hand, the system allows heat to be returned to the ground during the summer months, enabling seasonal thermal storage and contributing to the cooling of the buildings.” Overall, the planned system maximizes the efficient use of renewable energy sources and enables a highly sustainable, low-carbon energy supply for the neighborhood.

135 probes, 23,552 drilled meters, and a depth of 170 meters

The first of three construction phases carried out by BAUER began in November 2024. The initial scope focused on drilling operations. At 170 m each, the geothermal probes were the deepest ever drilled by the BAUER Umwelt division of BAUER Resources GmbH. In total, 135 geothermal probes were installed, representing a cumulative drilling length of 23,552 m. Drilling through fine sand was performed without casing using a KLEMM KR 806-3GW drilling rig.

Following completion of the geothermal probes, earthworks and connection works commenced, including the installation of eleven distribution chambers. Two temperature monitoring stations will continuously track subsurface temperature development throughout the district. During the final construction phase in autumn 2025, the geothermal probes were filled with a water-glycol mixture. Overall, on behalf of Stadtwerke Luebeck Innovation GmbH, the site team not only removed and disposed of 1,455 t of drill cuttings and 700 t of soil but also supplied and installed 750 t of sand – figures that represent an unusually large-scale undertaking even for the specialists at BAUER Resources.

Funding: The implementation of the heating supply concept is funded by the German Federal Office for Economic Affairs and Export Control (BAFA).



**Finanziert von der
Europäischen Union**

NextGenerationEU

Gefördert durch:



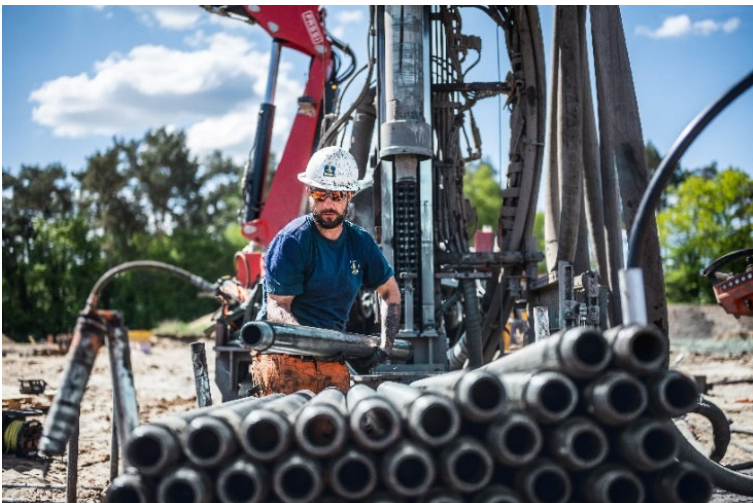
Bundesministerium
für Wirtschaft
und Klimaschutz

aufgrund eines Beschlusses
des Deutschen Bundestages

Bilder: pressebild-press-image-geothermie-geothermal-energy-luebeck-bauer-resources...



(1) BAUER Resources is installing 135 geothermal probes with an exceptional drilling depth of 170 m.



(2) The future residential area will be supplied with cold district heating via a geothermal system and heat pumps.

All images: © BAUER Group

About BAUER Resources Group

The regionally organized BAUER Resources GmbH is aligned to projects around the world with its subsidiaries in Germany, Africa, the Middle East and South America and has extensive expertise in the areas of drilling services and water wells, environmental services, constructed wetlands, mining and rehabilitation. With more than 30 years of experience, BAUER Resources GmbH's BAUER Umwelt business division is one of the leading specialists in site remediation, soil remediation and waste disposal, both in the domestic market and internationally. As an expert in pollution reduction, BAUER Umwelt offers a diverse range of services for all environmental issues. Other companies of the BAUER Resources Group are GWE GmbH, SCHACHTBAU NORDHAUSEN GmbH and SPESA Spezialbau und Sanierung GmbH. More at <https://resources.bauer.de/en>.

About BAUER

The BAUER Group is a leading provider of services, equipment and products dealing with ground and groundwater. The Group can rely on a worldwide network on all continents. The Group's operations are divided



into three forward-looking segments: Geotechnical Solutions, Equipment and Resources. BAUER profits enormously from the collaboration of its three business segments, enabling the Group to position itself as an innovative, highly specialized provider of products and services for demanding projects in specialist foundation engineering and related markets. BAUER therefore offers suitable solutions to the world's greatest challenges, such as urbanization, the growing infrastructure needs, the environment, as well as water. The BAUER Group was founded in 1790 and is based in Schrobenhausen, Bavaria. In 2025, it employed about 10,500 people and achieved total Group revenues of EUR 1.7 billion worldwide. More information can be found at <https://www.bauer.de/en>. Follow us on [Facebook](#), [LinkedIn](#), [Instagram](#) and [YouTube](#)!